



ORANGE COUNTY SANITATION DISTRICT

We protect public health and the environment by providing effective wastewater collection, treatment, and recycling.

ERRATA

FOR THE DRAFT ENVIRONMENTAL IMPACT REPORT

DATE: January 11, 2012

TO: Responsible and Trustee Agencies, Organizations, and Interested Parties

LEAD AGENCY: Orange County Sanitation District (Sanitation District)

PROJECT TITLE: Outfall Land Section and Ocean Outfall Booster Pump Station Piping Rehabilitation (proposed Project)

PROJECT LOCATION: Huntington Beach, CA

ERRATA: The Sanitation District published the Draft Environmental Impact Report (DEIR) for the proposed Project on December 14, 2011. It has come to our attention that three figures were inadvertently omitted from the published DEIR. The three figures (Figures 4.3-1, 4.3-2, and 4.3-3) each in Section 4.3 Biological Resources are attached with this errata sheet. We apologize for any inconvenience caused by this omission.

PUBLIC REVIEW PERIOD: Written comments on the Draft EIR will be received from **December 14, 2011 through January 27, 2012**. Please send your comments to: Jim Burror at the address shown below. Please include a return address and contact name with your comments.

Rob Thompson
c/o Jim Burror
Orange County Sanitation District
Engineering Planning
10844 Ellis Avenue
Fountain Valley, CA 92708

Serving
Anaheim
Brea
Buena Park
Cypress
Fountain Valley
Fullerton
Garden Grove
Huntington Beach
Irvine
La Habra
La Palma
Los Alamitos
Newport Beach
Orange
Placentia
Santa Ana
Seal Beach
Stanton
Tustin
Villa Park
Yorba Linda
Costa Mesa
Sanitary District
Midway City
Sanitary District
Irvine Ranch
Water District
County of Orange



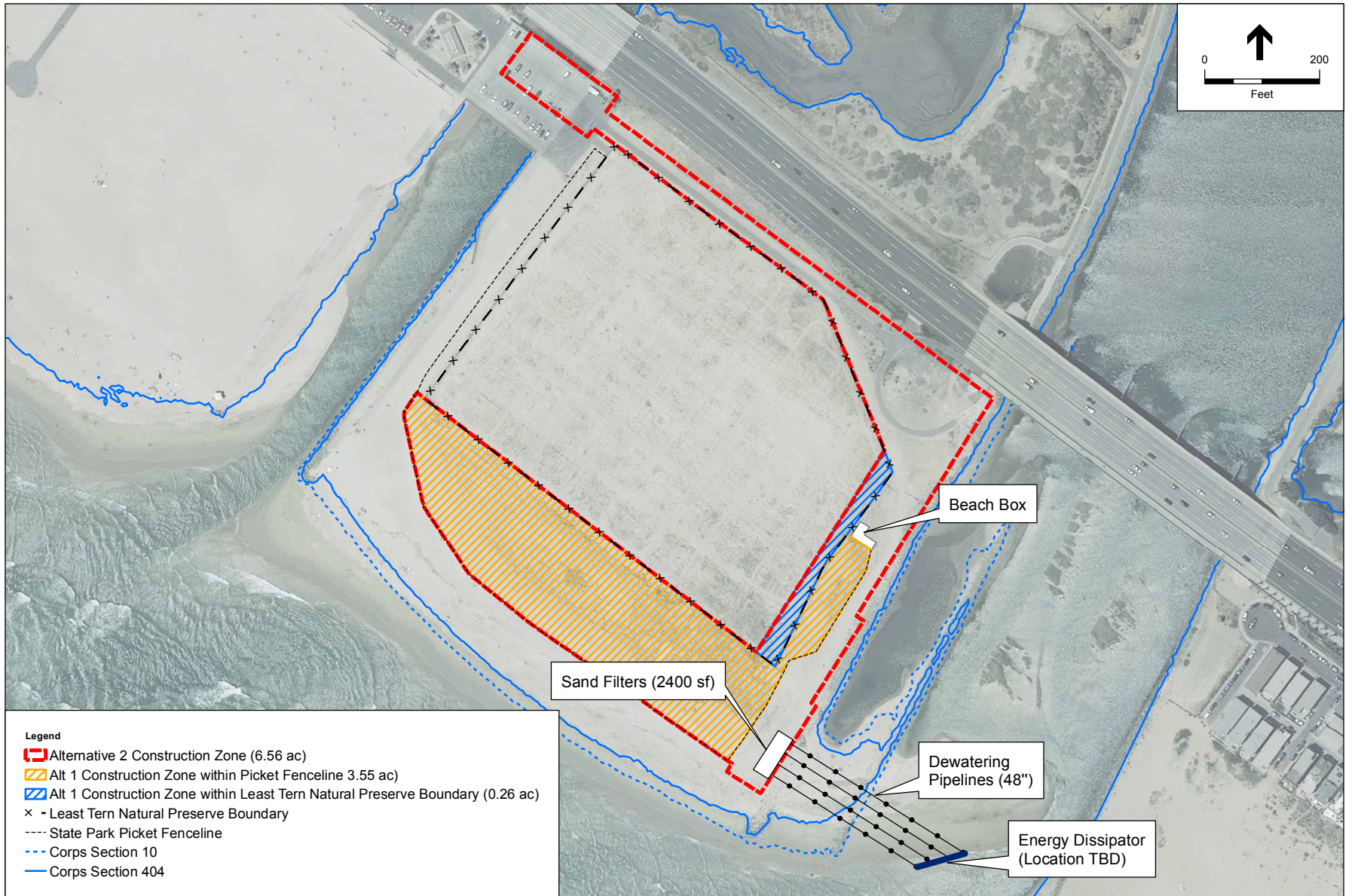
recycled paper



SOURCE: ESA, 2011.

Outfall Land Section and OOBs Piping Rehabilitation. 211261

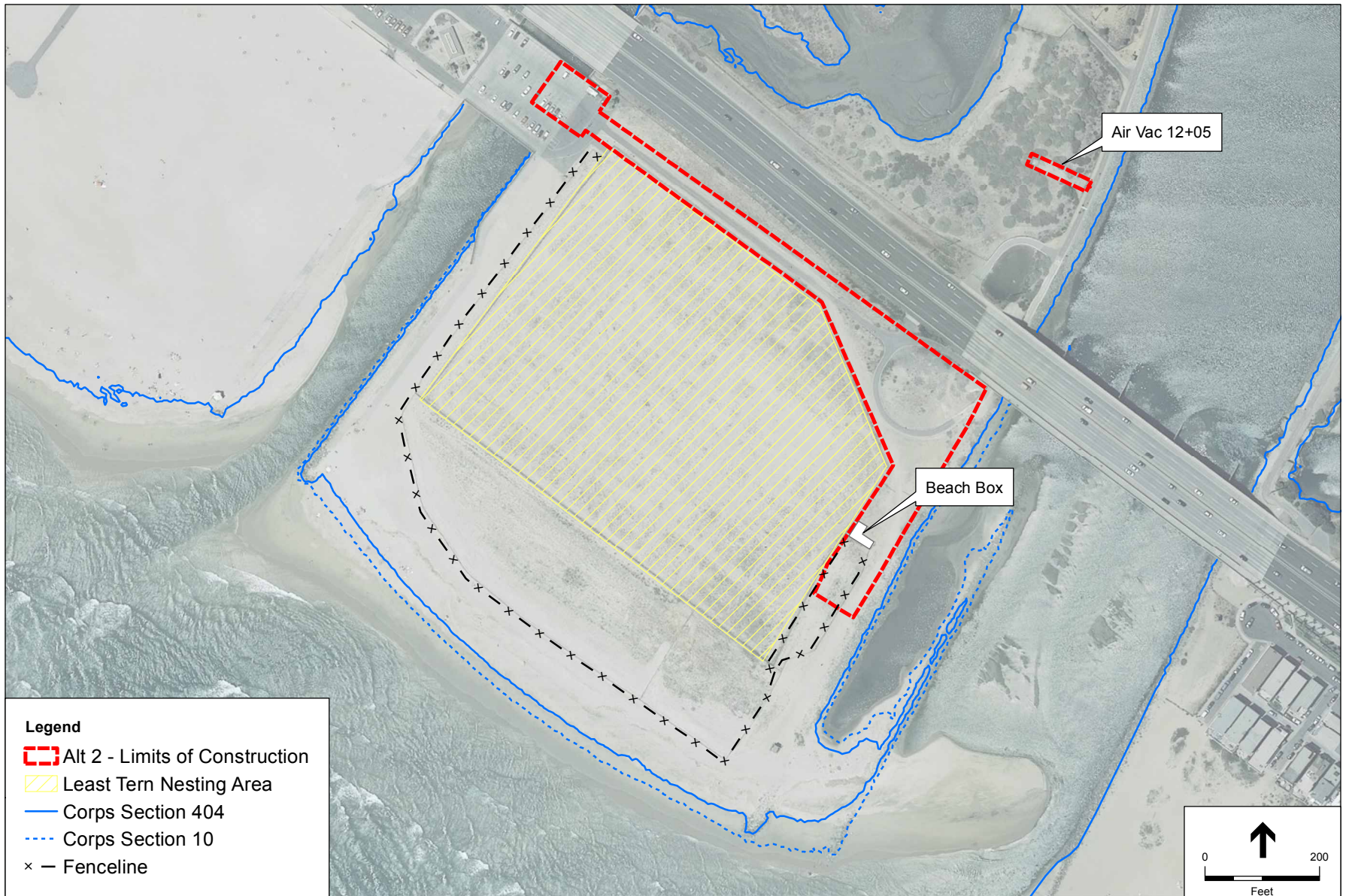
Figure 4.3-1
Air Vac 12+05 Work Area



SOURCE: ESA, 2011.

Outfall Land Section and OOBs Piping Rehabilitation. 211261

Figure 4.3-2
Alternative 1 Construction Footprint within
California Least Tern Preserve



SOURCE: ESA, 2011.

Outfall Land Section and OOBs Piping Rehabilitation. 211261

Figure 4.3-3
Alternative 2
Construction Footprint
Near California Least Tern Preserve